

WorldClient Instant Messenger

WorldClient Instant Messenger is a Closed Instant Messenger included free with MDaemon. It provides highly secure Instant Messaging (IM), logging, file sharing, group chat, address book synchronization, and an email notification tray applet to provide quick access to MDaemon's WorldClient features. This guide explains how to install, configure, and use WorldClient Instant Messenger.

WorldClient Instant Messenger - Setup Instructions

Enable WorldClient Instant Messenger in MDaemon

1. Select **Setup | Web & IM Services**.
2. Select **WCIM** in the left-hand navigation menu. [Figure 1-1]
3. Make sure **Enable WCIM (enables WorldClient)** and **Enable instant messaging** are checked. [Figure 1-1]

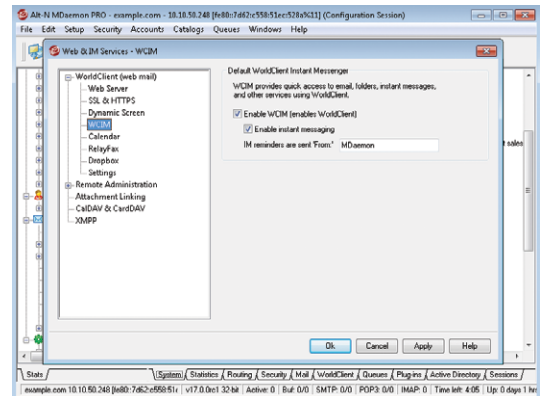


Figure 1-1

Download the WorldClient Instant Messenger Installer File

1. Log into WorldClient to download the WorldClient Instant Messenger desktop installer file.

Note: In most cases, the WorldClient address will be mail.example.com or mail.example.com:3000 (where 'example.com' is your domain name). See your MDaemon administrator if you are unsure which URL to use.
2. Click on the **Options** icon (⚙️) in the upper right-hand corner. [Figure 1-2]
3. Select **WorldClient Instant Messenger** in the drop-down menu. [Figure 1-3]
4. Click on **Download the WorldClient Instant Messenger Installer**. [Figure 1-3]

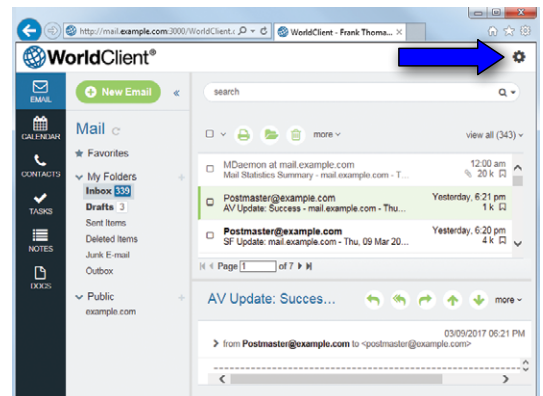


Figure 1-2

Launch the WorldClient Instant Messenger Installer

Double-click on the **WorldClient Instant Messenger install file** and follow the on-screen instructions.

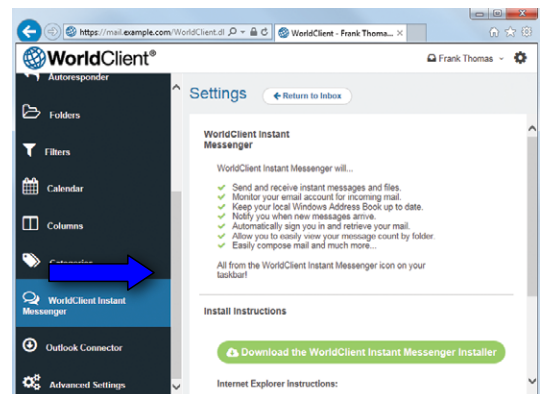


Figure 1-3

Configuring WorldClient Instant Messenger

WorldClient Instant Messenger uses two types of connection - XMPP for sending instant messages, and a separate Mail Check connection. The following instructions explain how to configure each type of connection in WorldClient Instant Messenger. Third-party XMPP chat clients can also be used.

Adding an XMPP (Instant Messaging) Connection

1. Open WorldClient Instant Messenger and in the window, select **File | Manage Connections**. [Figure 2-1]
2. Click on **Add new connection**, and then select **WCIMXMPP** in the drop-down menu. [Figure 2-2]
3. In the **XMPP Server Name** field, enter the host name of your MDaemon server. [Figure 2-3]
4. In the Encryption drop-down menu, select your preferred encryption method. The option "Use old-style SSL" uses the configured SSL port, while the option "Use encryption" uses TLS.
5. Select **Automatically detect internet connection** or **Use Proxy**. If you selected **Use Proxy**, enter the proxy server information in the **Proxy Server** field, and enter the corresponding port in the **Port** field.
6. In the **Account Information** section, fill in the **Description**, **Email Address**, and **Password** fields. Check the **Save Password** box if you'd like to save your password. [Figure 2-3]
7. By default, the **Resource** field will automatically populate. This field does not need to be changed.
8. Click **OK** to save your new connection.

Adding Users to Your Buddy List

1. In the WorldClient Instant Messenger window, select **File | Manage Connections**.
2. Select your XMPP connection & click on the **Connect** button.
3. Once you have successfully connected, select your XMPP connection & click on the **Edit** button. [Figure 2-4]
4. Select the **Buddy Search** tab.
5. Click on the **Search** button.
6. Enter the email address of the user you wish to add in the **Email** field, or enter the user's first and last name in the **Full Name** field. You can expand your search scope by using the % symbol as a wildcard (for example: %@example.com). [Figure 2-5]
7. Click on each user you wish to add to your buddy list, then click **Add**.

[Figure 2-5]

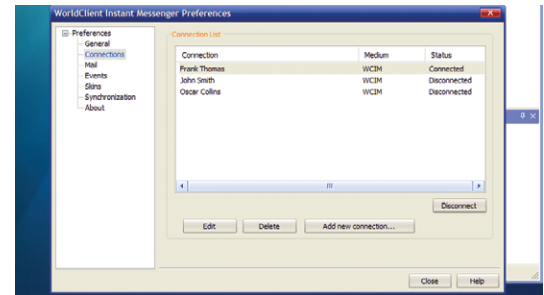


Figure 2-1

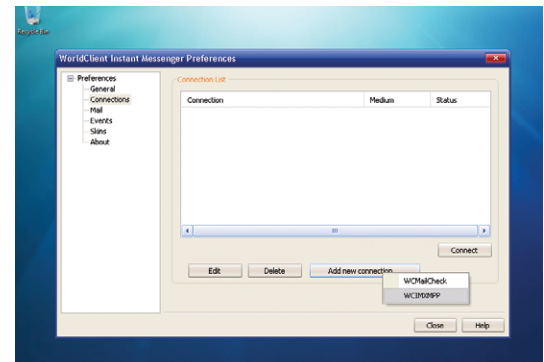


Figure 2-2

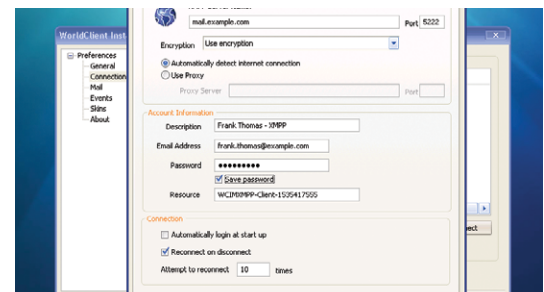


Figure 2-3

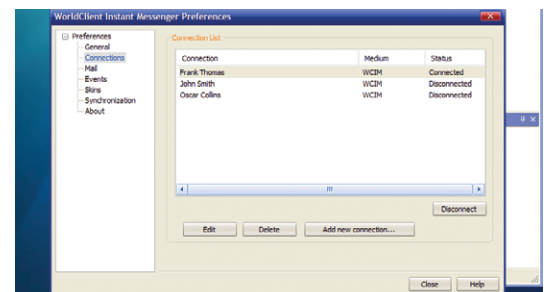


Figure 2-4

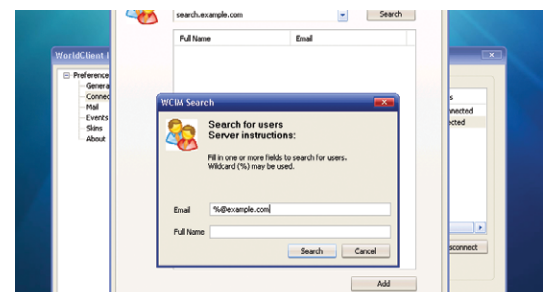


Figure 2-5

Sending an Instant Message

1. Double-click on a user in your buddy list to send an instant message. [Figure 3-1]
2. Under the **Action** menu, you can customize the text color, check spelling, send a file, or insert an emoticon. [Figure 3-2]
3. Enter your message, then press **Enter** or click **Send**. [Figure 3-3]

Adding a Mail-Check Connection

WorldClient Instant Messenger can automatically check for new mail at regular intervals and notify you when a new email message arrives. When you double-click on a folder in the WorldClient Instant Messenger folder list window, your browser will open and you will be taken to the selected mail folder in WorldClient. The following steps explain how to add a new mail-check connection.

1. In the WorldClient Instant Messenger window, click on **File | Manage Connections**.
2. Click on **Add new connection**, and then select **WCMailCheck** in the drop-down menu.
3. In the top blank, enter the complete URL to your WorldClient server (for example: <http://mail.example.com:3000>).
4. Select **Automatically detect internet connection** or **Use Proxy**. If you selected **Use Proxy**, enter the proxy server information in the **Proxy Server** field, and enter the corresponding port in the **Port** field.
5. In the **Account Information** section, fill in the **Description**, **Email Address**, and **Password** fields. Check the **Save Password** box if you'd like to save your password.
6. Click **OK** to save your new connection.

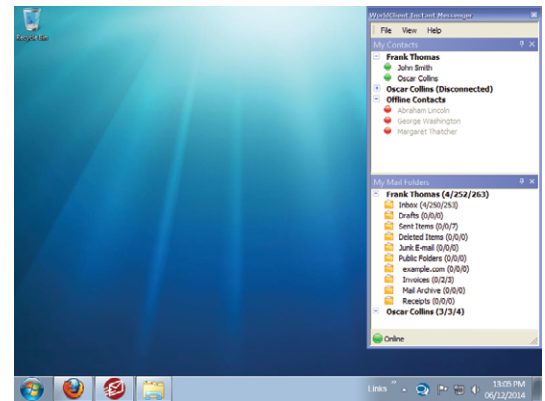


Figure 3-1

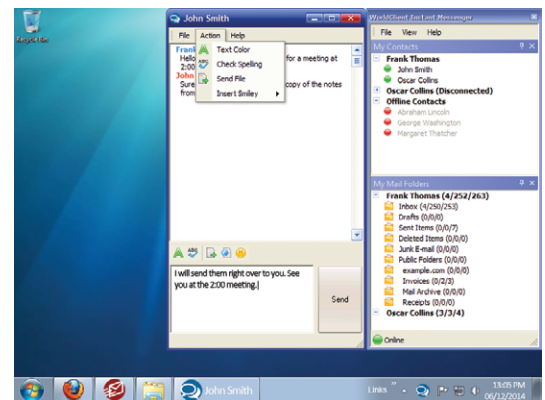


Figure 3-2

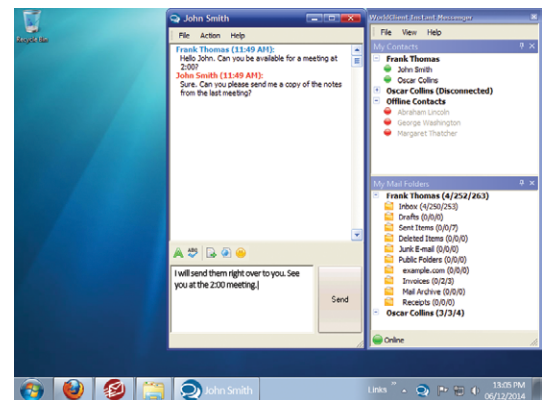


Figure 3-3